



Australian Government

Department of Health

Australia's Primary Health Care System

Challenges and Government Reform

Mark Booth

First Assistant Secretary

Primary and Mental Health Care Division

The Australian Health Care System Compared Internationally

COUNTRY RANKINGS

Top 2

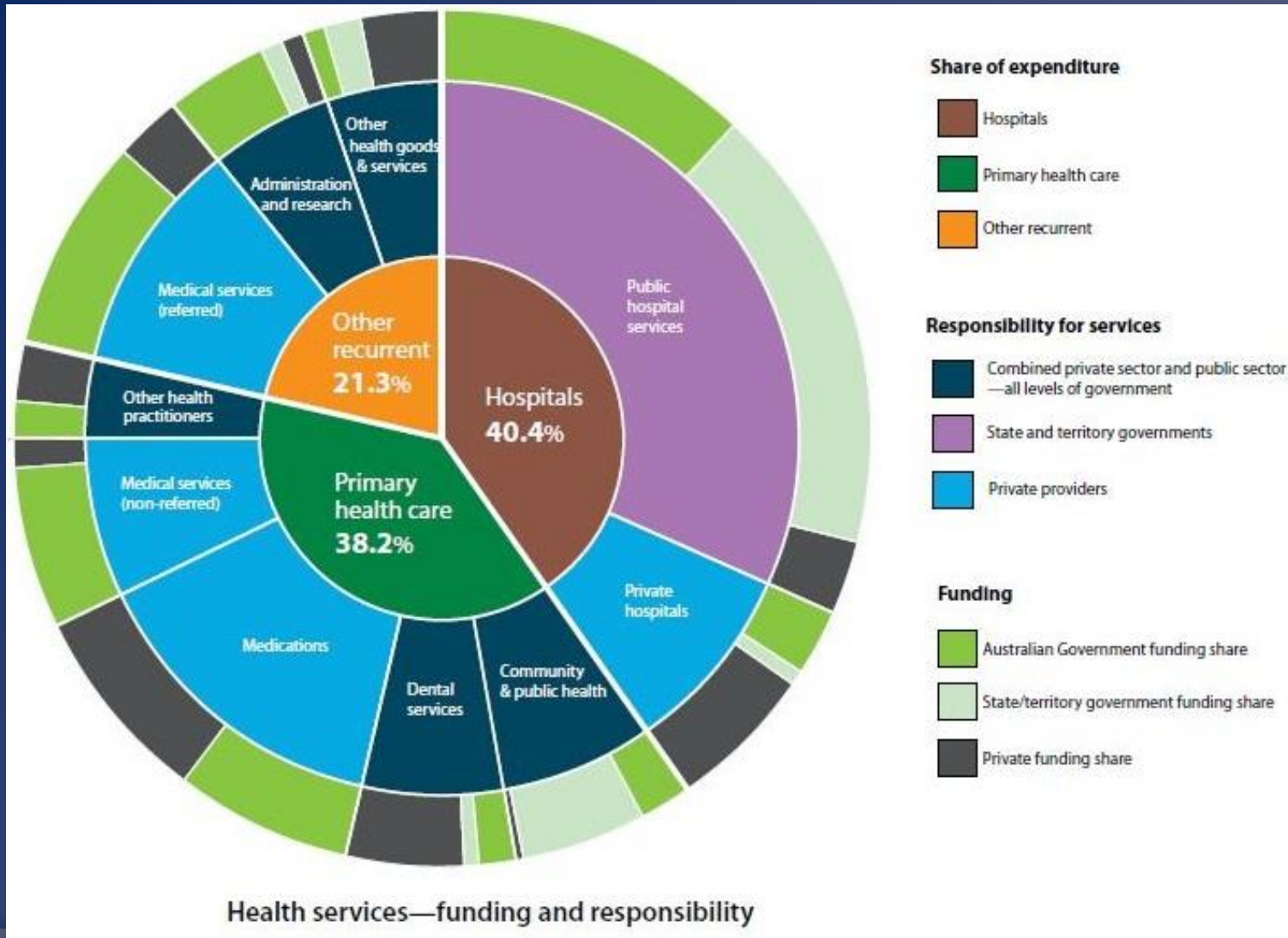
Middle

Bottom 2



	AUS	CAN	FRA	GER	NETH	NZ	NOR	SWE	SWIZ	UK	US
OVERALL RANKING (2013)	4	10	9	5	5	7	7	3	2	1	11
Quality Care	2	9	8	7	5	4	11	10	3	1	5
Effective Care	4	7	9	6	5	2	11	10	8	1	3
Safe Care	3	10	2	6	7	9	11	5	4	1	7
Coordinated Care	4	8	9	10	5	2	7	11	3	1	6
Patient-Centered Care	5	8	10	7	3	6	11	9	2	1	4
Access	8	9	11	2	4	7	6	4	2	1	9
Cost-Related Problem	9	5	10	4	8	6	3	1	7	1	11
Timeliness of Care	6	11	10	4	2	7	8	9	1	3	5
Efficiency	4	10	8	9	7	3	4	2	6	1	11
Equity	5	9	7	4	8	10	6	1	2	2	11
Healthy Lives	4	8	1	7	5	9	6	2	3	10	11
Health Expenditures/Capita, 2011	\$3,800	\$4,522	\$4,118	\$4,495	\$5,099	\$3,182	\$5,669	\$3,925	\$5,643	\$3,405	\$8,508

A complex Health Care System



Health System Challenges

- A shift in the burden of disease
- Escalating prevalence of chronic conditions
- Ageing population base
- Increasing use of Medicare services
- Escalating health care costs

Why focus on Primary Health Care?

Evidence indicates that health systems with strong integrated primary health care at their core are both effective in improving patient outcomes and experiences, and efficient at delivering appropriate services where they are needed most.

(Source: PHCRIS (2013) *Integrated Care: what policies support and influence integration in health care across New Zealand, Canada and the United States?*)

Australia's Primary Health Care System

Aims to:

- deliver high quality and locally relevant services to patients;
- provide patient centered care;
- integrate services across the health system to ensure patients can access the health care they need, when and where they need it;
- comprehensively, effectively and efficiently manage health care needs in the community; and
- support continuous improvement and innovation.

Commonwealth activities to improve Primary Health Care

- After Hours Primary Health Care Services
- Personally controlled electronic health record (PCEHR) system
- Committed to explore innovative funding models
- Review of Mental Health Programmes and Services
- Primary Health Networks

And more broadly, through:

- Health workforce
- Funding (MBS, PBS, PIP)

Primary Health Care Research, Evaluation and Development (PHCRED) Strategy

- The PHCRED Strategy was established in 2000
- Three arms of activity include:
 - The Australian Primary Health Care Research Institute (APHCRI);
 - The Primary Health Care Research Information Service (PHCRIS); and
 - National Health and Medical Research Council (NHMRC).
- A future primary health care strategy is being considered

Medicare Locals Review

December 2013

Review of Medicare
Locals Announced

March 2014

Recommendations
provided to
Government

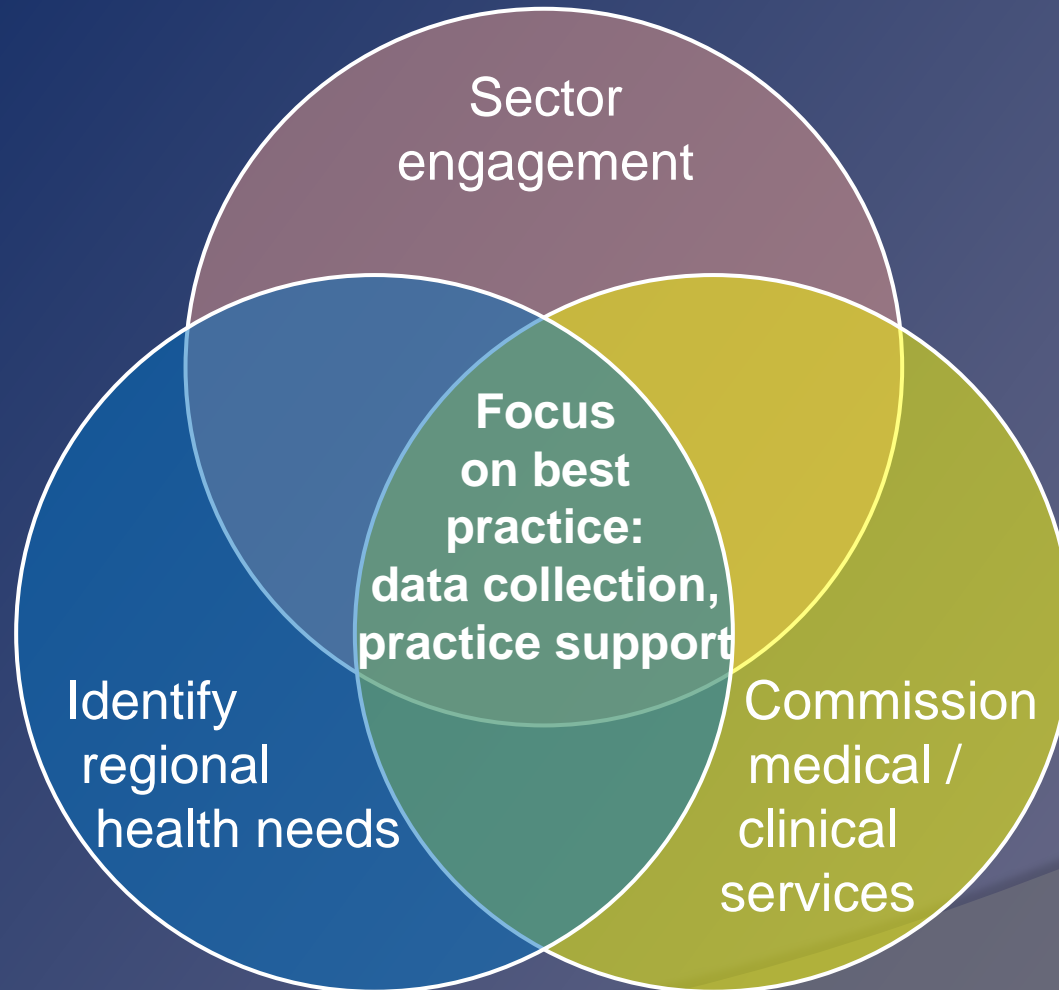
May 2014

Budget
announcement: all
recommendations
accepted, including
establishing Primary
Health Networks

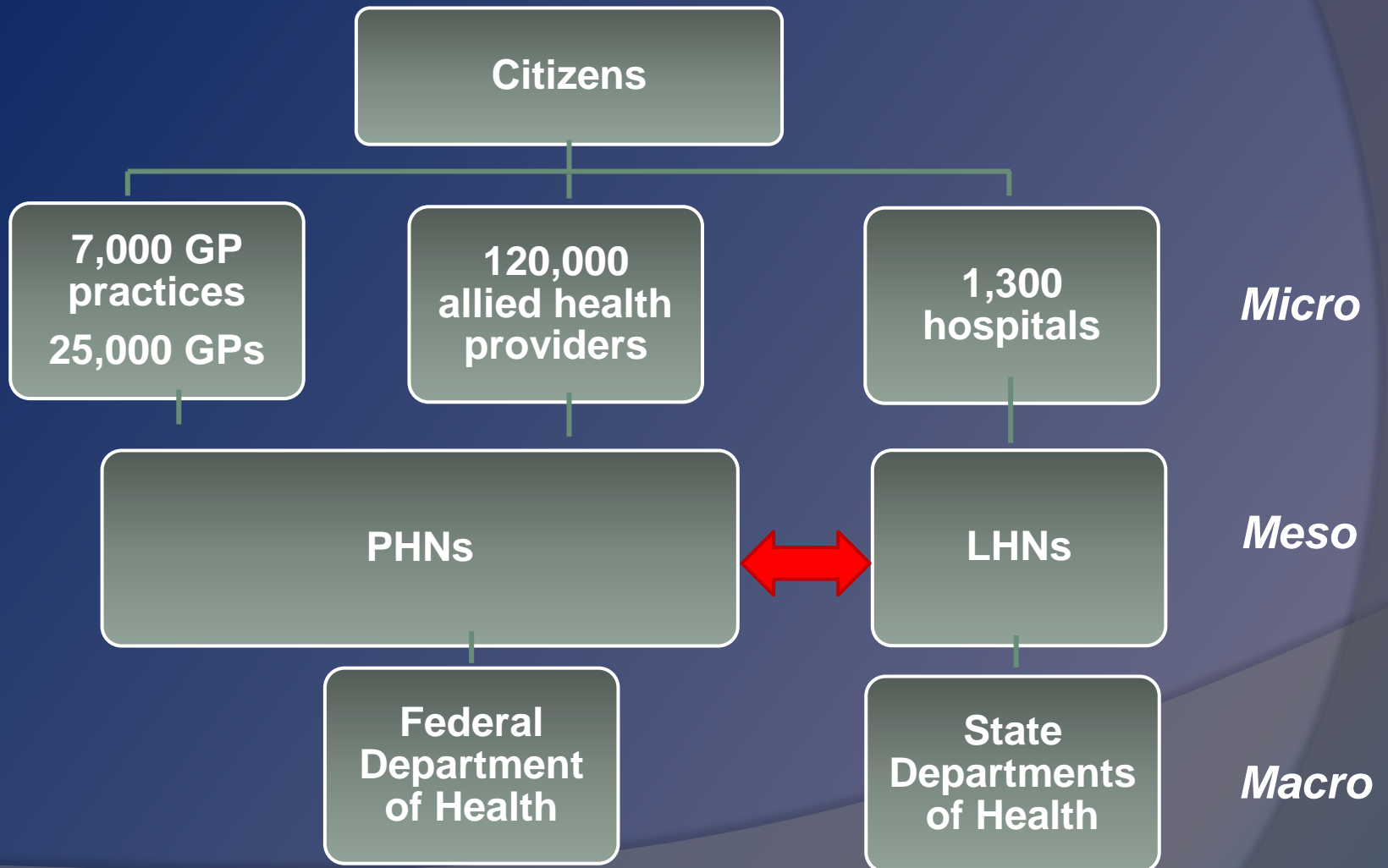
Role of PHNs

- To improve the efficiency and effectiveness of medical services delivered to individual patients and funded by the Commonwealth.
- Work directly with GPs, other primary care providers, secondary care providers and hospitals to ensure improved outcomes for patients.

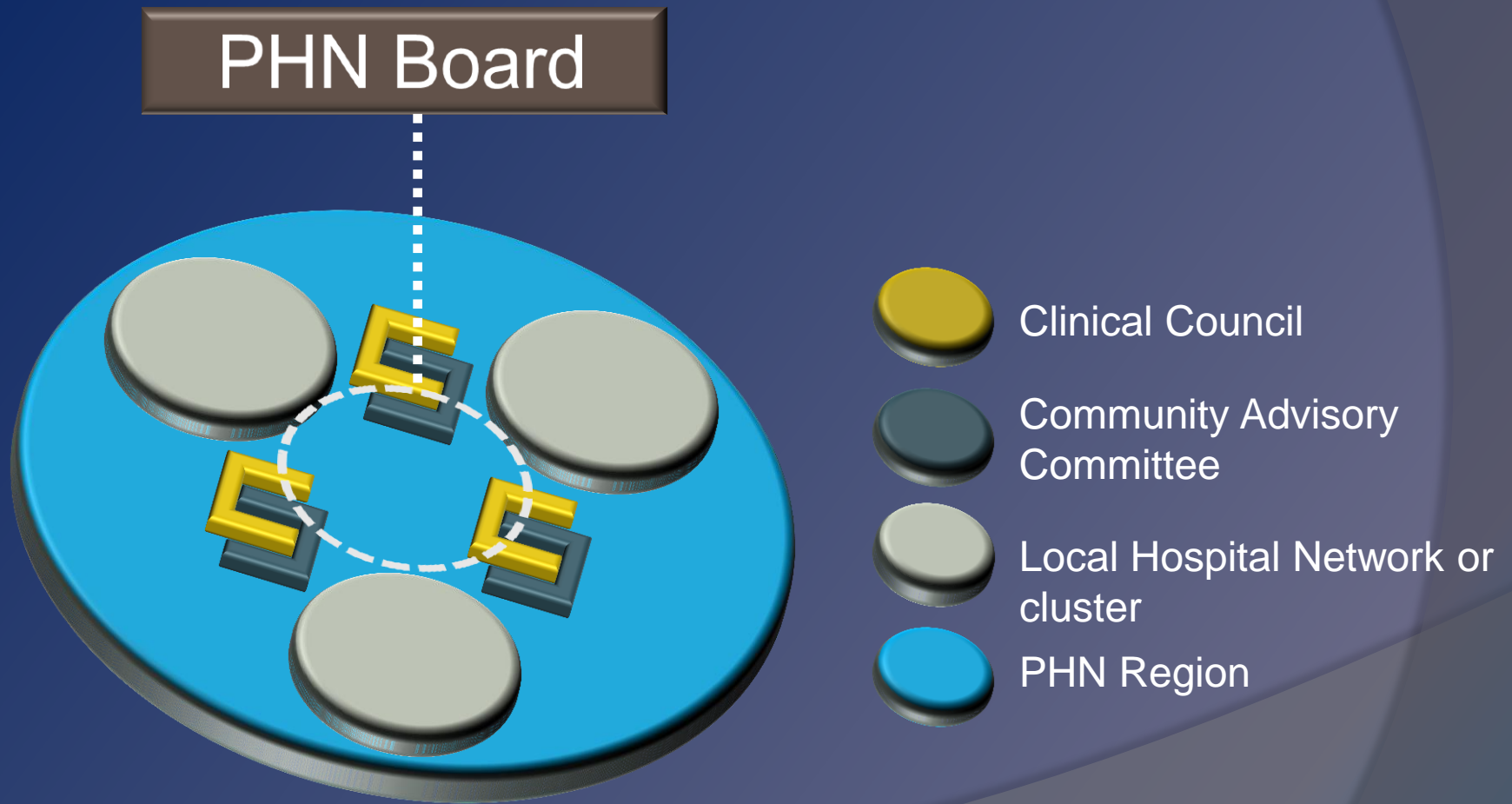
How will PHNs achieve reform?



Where do PHNs fit?



PHN Governance



Approach to Market

- The Approach to Market has commenced.
- PHN operators selected through a transparent, competitive, open process.
- Applications encouraged from wide variety of entities.
- Industry briefings are being conducted in capital cities.

Requirements of Approach to Market

- Applicants are expected to demonstrate:
 - Understanding of the PHN programme;
 - Capability and capacity to undertake the role of a PHN;
 - Understanding of particular regions and specific groups;
 - Governance and management structures; and
 - The ability to identify and manage conflicts of interest.
- More detailed advice on the requirements of the Approach to Market can be found on the department's website – www.health.gov.au

Establishment and transition period

- An establishment and transition-in period for PHNs from early 2015 will support transfer of activities that meet community needs.
- Service continuity is a priority in the establishment of PHNs and the department will work with Medicare Locals and PHNs to minimise disruption to services and patient care.

Ongoing reform

2014

- **October** - Review of After Hours Service Delivery
- **November** - National Review of Mental Health Programmes and Services

2015

- Doubling of Practice Incentives Programme (PIP) teaching payment
- Rural and Regional Training Infrastructure Grants

2016

- PIP Quality Improvement Incentive

Thank You

Information on PHNs is available on the Department's website (www.health.gov.au) and more information will be uploaded as it becomes available.

Raise queries via email to: phn@health.gov.au